



Lion NewsBITES

A Message from the School Principal

Hello MMLA Parents and Guardians,

This continues to be a very uneasy time in our world, but I can proudly say that our MMLA families have continued a stand of excellence! The support parents and guardians provide to our students and staff during virtual learning has been highly appreciated by staff. For our face to face students, we are very fortunate to have parents that take all the health and safety processes seriously.

We have consistently had 80-120 students in our building receiving face to face grade-level learning instruction. The MMLA staff team continues to do a wonderful job following the CDC and our implemented health and safety guidelines.

Some **important dates** coming up are Parent-Teacher Conferences on Oct. 15 & 16, Early Dismissal on Oct. 16 and Face-to-Face return on Oct. 26. Please look for details on all of these events in this newsletter.

All students are welcome to start face-to-face instruction on Monday, Oct. 26. Parents, please read this carefully. **It's not mandatory for students to return.** If you would like for your students to remain virtually MMLA will continue educating all grade level students Kindergarten Jr. through 8th grade virtually with rigor and relevance to grade-level content.

We would like to take this time to welcome back ALL MMLA students whos parents or guardians feel confident to have on school campus Monday-Friday for entire school days.



Transportation will be provided: Parents must go online or contact MMLA's main

office to complete the Bus Transportation Application form by Oct. 14 to be included on the Oct. 26 bus routes. Go to www.mmlalions.org and click on "forms" and then "Bus Transportation Application" and complete the online form. Families can fill out the application after Oct. 14 however there may be a waiting period to begin your route.

Food Distribution: Please continue to support our positive events for our families and community at large. We have food distributions four days a week. Look for the details in this newsletter. We strive to support our community in providing nourishment for all.

Lastly, please make sure we push our entire Lansing Community to **VOTE!** Age 18 and up must exercise their rights. Register to vote today and exercise your right on Nov. 3.

"Darkness cannot drive out darkness, only light can do that. Hate cannot drive out hate, only love can do that."

Martin Luther King Jr.

MMLA families! We must continue to stand together as one during these unprecedented times in our world for our children!

From the lenses of your Principal Mr. James

Medication Reminder

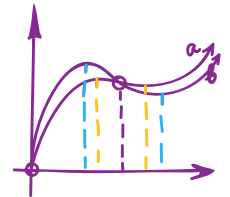


Just a friendly reminder that all medication must be brought in by an adult. There is a form that must be filled out by a parent. If your child has allergies or is allergic to all foods, please bring in a doctor statement.



Academic Update

We began taking the Fall MAP testing in September. This testing allows us to get a picture of where students are at academically - areas that they soar and areas that they struggle. Teachers use this data to inform their instruction in both their everyday lessons as well as small group instruction. Students will take this test two other times throughout the year, in February and again in May. Taking it multiple times allows us to track student progress and see just how far they came over the course of the year.



Please be informed that teachers are calling parents to bring in your student/ students for **NWEA/MAP testing**. Even if your child remains virtual throughout the school year. We must work out a time to have them on campus for testing. We can have them isolated when testing.



Schedule

- 7:30 AM School Building Opens. *Please drop students off at the West Entrance of the Main Building from the Gym Parking Lot area.*
- 7:30 - 8 AM Breakfast Available
- 7:45 AM Classes Begin
- 8:01 AM Students are tardy - *if your student will arrive after 8:00 AM call the main office to order a lunch for your child(ren) before 8:05 AM*
- 9:30 AM West Entrance doors will closed for student entry, *no in-person students after 9:30 AM*
- 11:05 AM - 12:30 PM Lunch *(exact time varies by grade)*
- 2:45 PM Student Dismissal



Upcoming Events

- Oct 15: Parent-Teacher Conferences 4-6 PM
- Oct 16: Early Release, **Dismissal @ Noon** (after lunch)
- Oct 16: Parent-Teacher Conferences 1-3 PM
- Oct 21: Bus Transportation route information distributed
- Oct 26: **All Students invited to return to face-to-face learning**, all students need to be in a school uniform
- Oct 29: **POSTPONED** Title I Family Math Night
- Nov 3: Election Day, Go Vote! Class is in session at MMLA
- Nov 9: School Board Meeting
- Nov 23-27: Fall Break, no students
- Nov 30: Classes Resume

Starting Monday, Oct. 26

All students are welcome to return face-to-face. It is NOT mandatory for your child(ren) to return face-to-face.

If you have questions about your child's learning options (staying virtual or starting face-to-face instruction) please contact Mr. James directly at 517-267-3573.

Transportation Sign Up

Sign up now for transportation by going to www.mmlalions.org and clicking on "Forms" and then "Bus Transportation Application" and complete the online form. Dean Transportation is asking for all applications requesting service on Oct. 26 be completed by Wednesday, Oct. 14.



OCTOBER 2020

S	M	T	W	Th	F	S
				1	2	3
4	5	6	7	8	9	10
11	12*	13	14	15	16	17
18	19	20	21	22	23	24
25	26	27	28	29	30	31

NOVEMBER 2020

S	M	T	W	Th	F	S
1	2	3	4	5	6	7
8	9*	10	11	12	13	14
15	16	17	18	19	20	21
22	23	24	25	26	27	28
29	30					

Key:

- Special Days/Events
- Key Testing Windows
- * Board Meetings

Non-Student Days:

- School Closed (No Staff)
 - No School*
 - Professional Development*
- *Staff Report per Working Days Calendar

Uniform Reminder

We have reached the time of year when the weather tends to fluctuate quite a bit. Much like how the temperature can vary greatly from morning to evening, the classroom temperature is often very different then outside leaving us with students at both extremes—those that are hot and those that are cold. Therefore, students are encouraged to wear a sweater that they can take on and off as they need.

A few uniform reminders specifically pertaining to cooler weather:

- If a student wears a long sleeve shirt under their normal uniform shirt, it must be a uniform color.
- Sweaters must be a uniform color.
- If a student wears tights/leggings under a uniform skirt, it must be a uniform color. Leggings may not be worn as pants.
- Hoodies may only be worn if they are the MMLA hoodie that is available for purchase in the main office for \$25. Stop by and purchase one while they last!
- School colors for tops are white, black and sky blue.



Parent-Teacher Conferences

Look for sign up information from your child's teacher(s) for Parent-Teacher Conferences. We're offering face-to-face and virtual meeting options. Please schedule a time with the teachers.

Thursday, Oct. 15

4:00 - 6:00 PM

Friday, Oct. 16

1:00 - 3:00 PM



Free Meals: Distribution Schedule

* **NEW** * available to all:

- Wednesdays: 1pm to 2:30pm or until meals run out (USDA Boxes including fresh produce, dairy, and meat)

Virtual MMLA Students and Community Children:

- Mondays: 1pm to 2:30pm or until meals run out (3 breakfasts & 3 lunches per child up to 18*)
- Thursdays: 1pm to 2:30pm or until meals run out (4 breakfasts & 4 lunches per child up to 18*)

Face-to-Face MMLA Students:

- All School Days: 1 breakfast and 1 lunch will be distributed to your child for immediate consumption at school
- Fridays: 2 breakfasts and 2 lunches will be sent home with your child for weekend consumption
- Fridays: Weekend Survival Kits will be sent home with your child for weekend consumption. These kits typically include shelf stable food that need to be prepared such as boxes of macaroni and cheese.

It's important to know that students receiving meals at school during face to face learning can not also receive curbside meals.